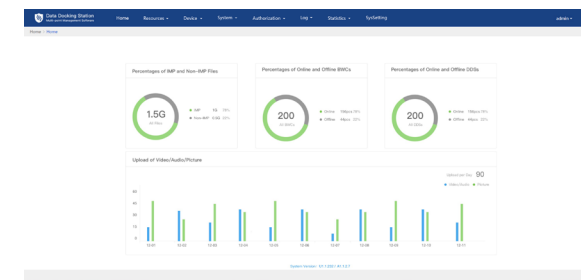


ZFS-KDCA1

Data Docking Station Management Software



Specifications

	ZFS-KDCA1 Data Docking Station Management Software
System Access	
Device Access	up to 10,000 body worn cameras access
	up to 500 data docking stations access
User Access	up to 50 users
Management Functions	
Devices Registering	Kedacom body worn camera, Kedacom data docking station
Resource Access	Video recording, Audio recording, Snapshot, Log
User Management	Admin / User
User Authorization	Layered authorization
Statistics	Dash Board, Graphical statistics
Application Programming	SDK
Browser	Kedacom Chrome
Network	
Network Protocols	TCP/IP, UDP, HTTP, XML, IPv4
User Interface	Web Client
System Requirements	
CPU	Intel i5 4-core processor 2.0GHz or above
RAM	32GB or above
HDD	Enterprise Class SATA HDD, 1TB, 7200 RPM, 6Gb/s, 64MB cache, or above
Ethernet	1 x Gigabit network port
Operating System	Centos 7.4

Features

Manage The Data Docking Station by PC

- ZFS-KDCA1 can help you manage the data docking station by PC. You can easily access the data docking station and all the body worn cameras, download the recordings and snapshots.

Multiple Device Management

- ZFS-KDCA1 supports multiple device management. The software can manage up to 10,000 body worn cameras and 500 data docking stations. It support graphical statistics, so you can get and view the operating statistics of all the body worn camera.

High-performance, High-capacity

- Average response for web page loading: ≤ 5s
- Maximum delay for searching response: ≤ 5s

High Security

- Supports layered authorization
- Supports full and accurate user logs